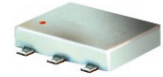


Surface Mount RF Transformer

ADT1.5-1+ ADT1.5-1

50Ω 0.5 to 650 MHz



CASE STYLE: CD542
PRICE: \$2.95 ea. QTY (10-49)

**+ RoHS compliant in accordance
with EU Directive (2002/95/EC)**

*The +Suffix identifies RoHS Compliance. See our web site
for RoHS Compliance methodologies and qualifications.*

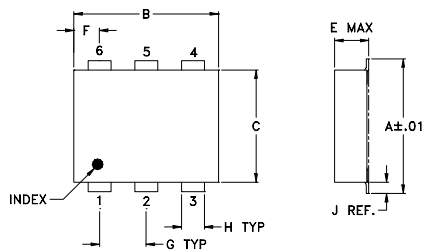
Maximum Ratings

| | |
|---|----------------|
| Operating Temperature | -20°C to 85°C |
| Storage Temperature | -55°C to 100°C |
| RF Power | 1W |
| DC Current | 30mA |
| Permanent damage may occur if any of these limits are exceeded. | |

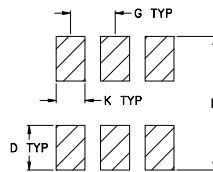
Pin Connections

| | |
|---------------|---|
| PRIMARY DOT | 1 |
| PRIMARY | 3 |
| SECONDARY DOT | 4 |
| SECONDARY | 6 |
| SECONDARY CT | 2 |
| NOT USED | 5 |

Outline Drawing



PCB Land Pattern



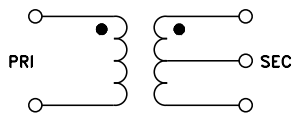
Suggested Layout,
Tolerance to be within ±.002

Outline Dimensions (inch/mm)

| | | | | | | | |
|------|------|------|------|------|------|------|-------|
| A | B | C | D | E | F | G | |
| .272 | .310 | .220 | .100 | .112 | .055 | .100 | |
| 6.91 | 7.87 | 5.59 | 2.54 | 2.84 | 1.40 | 2.54 | |
| H | J | K | L | | | | wt |
| .030 | .026 | .065 | .300 | | | | grams |
| 0.76 | 0.66 | 1.65 | 7.62 | | | | 0.20 |

Demo Board MCL P/N: TB-430

Config. A



Features

- excellent return loss, 17 dB typ. in 1 dB bandwidth
- aqueous washable
- protected under US patent 6,133,525

Applications

- impedance matching
- balanced amplifier

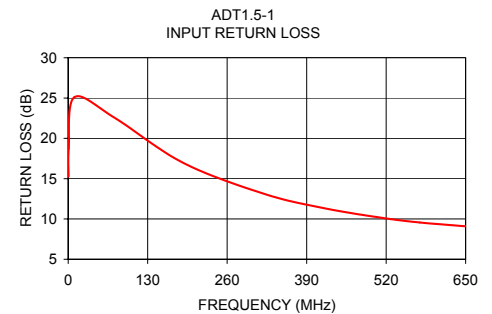
Transformer Electrical Specifications

| Ω RATIO (Secondary/Primary) | FREQUENCY (MHz) | INSERTION LOSS* | | |
|-----------------------------------|--------------------|-----------------|-------------|-------------|
| | | 3 dB MHz | 2 dB MHz | 1 dB MHz |
| 1.5 | 0.5-650 | 0.5-650 | 0.8-500 | 1-300 |

* Insertion Loss is referenced to mid-band loss, 0.3 dB typ.

Typical Performance Data

| FREQUENCY (MHz) | INSERTION LOSS (dB) | INPUT R. LOSS (dB) |
|--------------------|---------------------------|--------------------------|
| 0.50 | 0.56 | 15.26 |
| 0.90 | 0.54 | 18.76 |
| 10.00 | 0.35 | 25.10 |
| 76.00 | 0.43 | 22.55 |
| 188.00 | 0.59 | 16.96 |
| 320.00 | 0.85 | 13.13 |
| 420.00 | 1.08 | 11.31 |
| 515.00 | 1.32 | 10.12 |
| 575.00 | 1.52 | 9.56 |
| 650.00 | 1.72 | 9.09 |



Mini-Circuits®
ISO 9001 ISO 14001 AS 9100 CERTIFIED

P.O. Box 350166, Brooklyn, New York 11235-0003 (718) 934-4500 Fax (718) 332-4661 The Design Engineers Search Engine www.minicircuits.com Provides ACTUAL Data Instantly at minicircuits.com

Notes: 1. Performance and quality attributes and conditions not expressly stated in this specification sheet are intended to be excluded and do not form a part of this specification sheet. 2. Electrical specifications and performance data contained herein are based on Mini-Circuit's applicable established test performance criteria and measurement instructions. 3. The parts covered by this specification sheet are subject to Mini-Circuits standard limited warranty and terms and conditions (collectively, "Standard Terms"); Purchasers of this part are entitled to the rights and benefits contained therein. For a full statement of the Standard Terms and the exclusive rights and remedies thereunder, please visit Mini-Circuits' website at www.minicircuits.com/MCLStore/terms.jsp.

For detailed performance specs
& shopping online see web site

REV. D
M112648
ADT1.5-1
ED-7963/1
WZ/TD/CP/AM
071105